

# PROCESSING HINTS #9

## Rapid Set Repair Mortar - restoration of uneven paved surfaces with MORTAR MIX

### PREAMBLE

These hints inform about the processing of Rapid Set MORTAR MIX as pavement joint mortar. They do not replace our currently valid data sheets. Our technical application recommendations are based on our experience. We recommend to adapt the processing to the local conditions and refer to our general terms of sale and delivery.

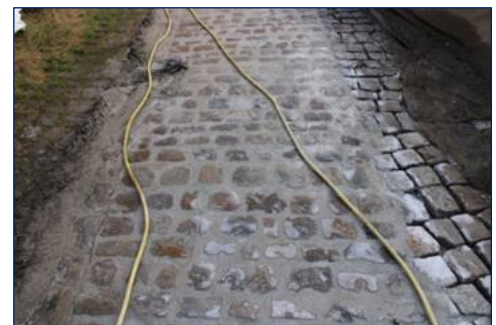
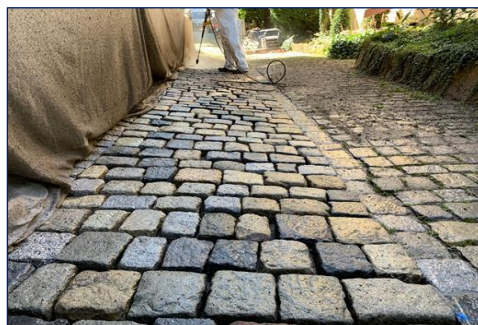
For further information, please refer to our respective product data sheets, maintenance instructions and tender specifications.

### CLEANING OF JOINTS

Remove dirt and old joint material with high pressure cleaner (>300 bar), solid old joint material remains (only removed in few areas in view of the high effort).

Clean joints to a depth of at least 3 cm.

Picture 1: Old joint material is removed with high pressure cleaner



Picture 2: Area grouted with MORTAR MIX

### APPLICATION OF RETARDER

The sub-base /pavers must be dry. Apply the surface retarder onto the pavers using a lambskin roller (painters' paint roller) and, depending on the temperature, wait approx. 30 minutes until the retarder has dried.

Picture 3: Freshly milled area



Picture 4: Grouted area, which was cleaned with high pressure water.



### APPLICATION

Mix MORTAR MIX with water and fill diagonally into the joints to a depth of at least 3 cm using a rubber squeegee.

Picture 5: Milling of surface



Picture 6: Finished/usable paved area



# Rapid Set Repair Mortar - restoration of uneven paved surfaces with MORTAR MIX



## CLEANING OF SURFACE

The paving stones are cleaned using a high-pressure cleaner/sponge cleaning machine. The paving stones soiled with mortar are cleaned with a high-pressure water cleaner (e.g. Kärcher) at 300 bar (the cleaning lance is held at lowest pressure adjustment at a 90° angle to the surface) or with a sponge cleaning machine. This works best on a straight surface.

Picture 7: Finished/usable paving area



Picture 8: Finished/usable paved area



## MILLING THE PAVERS

Two hours after joint filling with MORTAR MIX and subsequent cleaning (depending on the respective ambient temperatures), the paving stones are milled.



ISO 9001  
Zertifiziertes  
Qualitätsmanagementsystem  
[www.tuev-sued.de/ms-zert](http://www.tuev-sued.de/ms-zert)

### KORODUR International GmbH

Werner-von-Braun-Straße 4 · 92224 Amberg

Phone +49 (0) 9621 4759-0 · Fax +49 (0) 9621 32341 · [info@korodur.de](mailto:info@korodur.de)

[www.korodur.de](http://www.korodur.de)