



KORODUR REPORT

Dear Business Partner,

First of all, we very much hope that you are doing well. We have all been going through a difficult time for a year now due to the Corona pandemic. We wish you and your families all the best - and we are already very much looking forward to meet you again under different circumstances.

We are very proud that in these challenging times we have managed to ensure the security of supply to our customers. We have done this while taking all necessary precautions for the safety of our employees.

Today we would like to share with you again some selected topics from the "World of KORODUR". We hope you enjoy reading.

Your KORODUR Team

■ KORODUR Innovation - 3D Concrete Printing



3D Concrete Printing! This is the success of an almost ten-year partnership.

Since 2013, KORODUR has been working with its Dutch partner company [CyBe](#) Construction in the field of 3D concrete printing. We are proud to have been able to bring 85 years of experience in special building materials to the research and implementation, knowing

that materials technology is an essential element of the process. Berry Hendriks, founder and CEO of CyBe, sees the future of the technology above all: „Our mission is to push 3D concrete printing technology to enable a sustainable and affordable development in the construction industry – world-wide.“

After almost 10 years of collaboration, we can boast numerous international projects that impressively demonstrate that additive manufacturing can usher in a serious revolution in the construction industry. Click for an insight into our [joint collaboration](#), [projects](#) and two articles [BAU-Magazin](#) und [CPT Magazine](#).

www.3d-concrete-printing.com

■ KORODUR - the exciting alternative to epoxy mortar

Supply bottlenecks and drastic price increases for raw materials used in epoxy resin production are reported on the part of various construction chemicals industry associations. This also affects the availability of epoxy resin mortar.

Especially in repair, **mineral-based mortars** such as **NEODUR HE 60 rapid**, **NEODUR Level** and, of course, **Rapid Set repair mortars** offer a significantly **more cost-effective** as well as **time-saving** alternative, which is ultimately also **less harmful** to people and the environment. In the recent article of a [German BAU Magazine](#) you can find out more about the exciting alternatives.

Professional working with Rapid Set®

Rapid Set is a high-performance fast-setting repair mortar for floors, walls, ceilings, connection and passage elements, forms and surfaces. The outstanding features of Rapid Set allow even difficult repairs and forms. The special formulation of Rapid Set stands for universal use, fast results and easy handling.

Rapid Set® offers fundamental advantages compared to epoxy mortar!

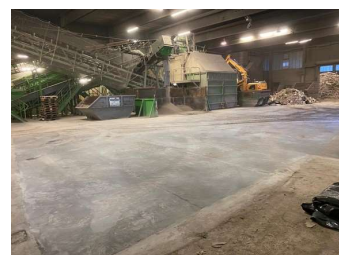
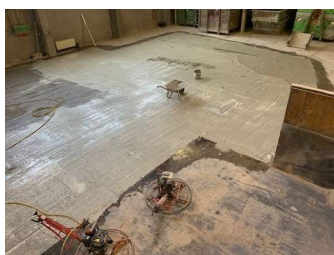
As a purely mineral product, Rapid Set impresses with maximum efficiency compared to products based on epoxy resin. Besides its technical benefits and easy processing, Rapid Set also convinces by reliable availability and an extremely favorable price-performance ratio.

Test Rapid Set and get convinced.

	Rapid Set	EPOXY MORTAR
PRICE/COSTS	☺ significantly lower material costs	☹ significantly higher material costs may even increase due to the weight of the materials and supplies.
HEALTH	☺ all contained substances are purely mineral	☹ resin and hardener may cause chemical burns, allergies and respiratory diseases
PROCESSING	☺ just mix with water and process	☹ no general rule for construction materials (epoxy resin), no guidelines and no mixed special instructions for concrete (poured concrete)
MATERIAL CONSUMPTION	☺ mix quantity as needed, variable water usage (concretely) adaptable to requirements	☹ in general, the complete unit must be mixed, the mixing ratio of the components must be strictly kept
WORK PROTECTION	☺ conventional work protection, standard protective gloves and goggles recommended	☹ in general, extensive protective clothing (protective goggles, respiratory protection as well as sufficient ventilation) are required
CLEANING OF TOOLS	☺ with water only	☹ in general, with acetone (highly inflammable), high cleaning costs, extensive cleaning effort
DISPOSAL	☺ dispose residual material in ordinary construction waste	☹ residual material must be disposed in the public collection facility, material that has not set must be disposed as hazardous material
FAST	☺ fast setting, ready for stress already in approx. 1 hour after final set	☹ depending on the formulation between a few minutes and several hours, up to 24 hours
FIRE CLASS	☺ A1 - non inflammable building materials	☹ B1 - inflammable building materials
MULTIPURPOSE	☺ for floor, wall, ceiling, columns and columns, up to 600 mm thickness in slabs, ground floors, paving and more	☹ mainly for flooring areas, depending on the application different formulations required
ENVIRONMENT	☺ pure mineral, CO ₂ -reduced cement technology	☹ see disposal!

■ KORODUR Fast-setting Screed - industrial floor renovation over the turn of the year

The floor in the halls of waste disposal and recycling companies sometimes has to withstand extreme loads. At the end of last year, a floor renovation could no longer be postponed at the WEAG plant in Köngen. Since the renovation work was only possible in a **short time window**, the fast-setting screed **NEODUR HE 60 rapid** was used - fast, low shrinkage, and of course wear-resistant. [Read more.](#)



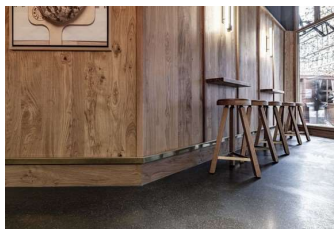
■ KORODUR Thin Screed - industrial floor renovation during operation

At Lausitzer Megaflex Schaumstoff GmbH, the floor in the production halls had to be refurbished. The special challenge was that the rehabilitation could only be carried out **during ongoing operation**. Therefore, the decision was made to use the industrial flooring **NEODUR Level**, a fast-setting thin screed with wear carrier. [Read more.](#)



■ KORODUR Terrazzo Screed in the Bochum Bakery & Pastry Shop Schmidtmeier

The Schmidtmeier bakery was looking for a decorative screed for its branch in Bochum's pedestrian zone that shone with extraordinary color effects and high technical quality. Here, the choice fell on our high-quality decorative floor **TRU PC** in terrazzo optics. [Read more.](#)



■ KORODUR Cat Litter at Amazon!

goodcat fine clumping litter from the house KORODUR online at Amazon!

Order today the attractive advantage **goodcat „golden NATURE“** or **goodcat „silver Classic“**!



LINKS

www.3d-concrete-printing.com
www.korodur-rapidset.com
www.ausschreiben.de/katalog/korodur

www.cybe.eu
www.goodcat.de
www.youtube.com/user/KORODUR

We hope to have presented you again interesting news with the KORODUR Report. Should you have any topic requests or suggestions for the KORODUR Report, we would be pleased to hear from you via e-mail to report@korodur.de.

KORODUR Westphal Hartbeton GmbH & Co. KG
KORODUR International GmbH
Wernher-von-Braun-Str. 4
92224 Amberg, Germany

Tel. +49 (0)9621 4759-0
Fax: +49 (0)9621 32341
E-Mail: info@korodur.de

[Klicken Sie hier um sich aus dem Verteiler abzumelden.](#)